

Installation Instructions

ODH-6000 Over Door Heater

Reference
J184h

SAFETY

The correct procedures for working at height must be adopted when installing this heater.

The heater must be installed by a suitably qualified person in accordance with current regulations.

CONTENTS.

Remove from carton and check contents:

- heater unit
- 2 no. mounting brackets
- 2 no. M6 bolts, 2 no. shakeproof washers, 4 no. large plain washers
- 2 no. M4 set screws, 2 no. shakeproof washers.
- 1 no. Cord grip gland and locknut

Ensure all packing material is removed and inlet/outlet grilles are clear.

LOCATION.

This heater is designed for high level use above frequently used doorways. It must not be installed less than 1.8metres from floor level and the maximum recommended mounting height is 2.8m. It should not be positioned immediately below a fixed socket outlet. Optimum performance is achieved when the heater is positioned as close to the top of the door as possible. For wider doorways multiple units can be installed giving a continuous curtain of hot air.

FIXING.

The heater can be mounted either a) directly to the wall or b) to the wall or ceiling using the brackets supplied.

- a) The unit is mounted directly to the wall via three keyhole slots and fixed via three holes.
- 1) Securely fix two No.10 screws (not supplied) at 750mm centres and a third centrally, 208mm above desired position for outlet grille.
 - 2) Slide unit over screws and ensure secure fixing.
 - 3) For extra security the front cover can be removed and the additional mounting holes used.

(DISCONNECT FROM POWER SUPPLY BEFORE REMOVING COVER)

- b) The bracket can be fixed to either the wall or ceiling provided secure fixings can be made
- 1) Remove plugs from holes in end of unit, loosely fit M6 bolts with 2 plain washers and shakeproof washer closest to head.
 - 2) Provisionally place in brackets to ascertain optimum location and mark fixing holes (2 no. 40mm apart 800mm between centres)
 - 3) Remove from heater and securely fix brackets
 - 4) Replace heater at appropriate angle by aligning with holes in bracket. Tighten set screws and bolts securely.

ELECTRICAL CONNECTIONS.

Connections are made in accordance with the circuit diagram by cable via the cord grip gland or by conduit entry if preferred. If necessary the adjacent hole plug is removed for connection of the remote switch.(ODH-RSW)

The Heater should be installed in accordance with the latest edition of the IEE Regulations for Electrical Installations (BS 7671 :2001) by a suitably qualified person.

The unit should be permanently connected to a suitable 230Vac 50Hz. power supply incorporating a means of isolation having a contact separation of at least 3mm in all poles.

Note: Ensure link between L and Lt is secure otherwise heater will not operate

WARNING: THE HEATER MUST BE EARTHED.

OVER TEMPERATURE CUT OUT

Should the heater exceed normal operating temperature the over temperature cut out on the heating element will operate.

To RESET - switch off power to the unit and allow to cool before switching on again. If the problem persists consult a suitably qualified person.

Note:- **Do not cover the unit** or allow the inlet grille to be obstructed as this could cause over heating and possible damage.

CONTROLS.

Heat control is by the 3 switches located next to the outlet grille.

On / off - fan only

One on - half heat (3.0 kW)

Two on - full heat (6.0kW)

Note: the switches are electrically interlocked to ensure the heat cannot be on without the fan operating.

CLEANING.

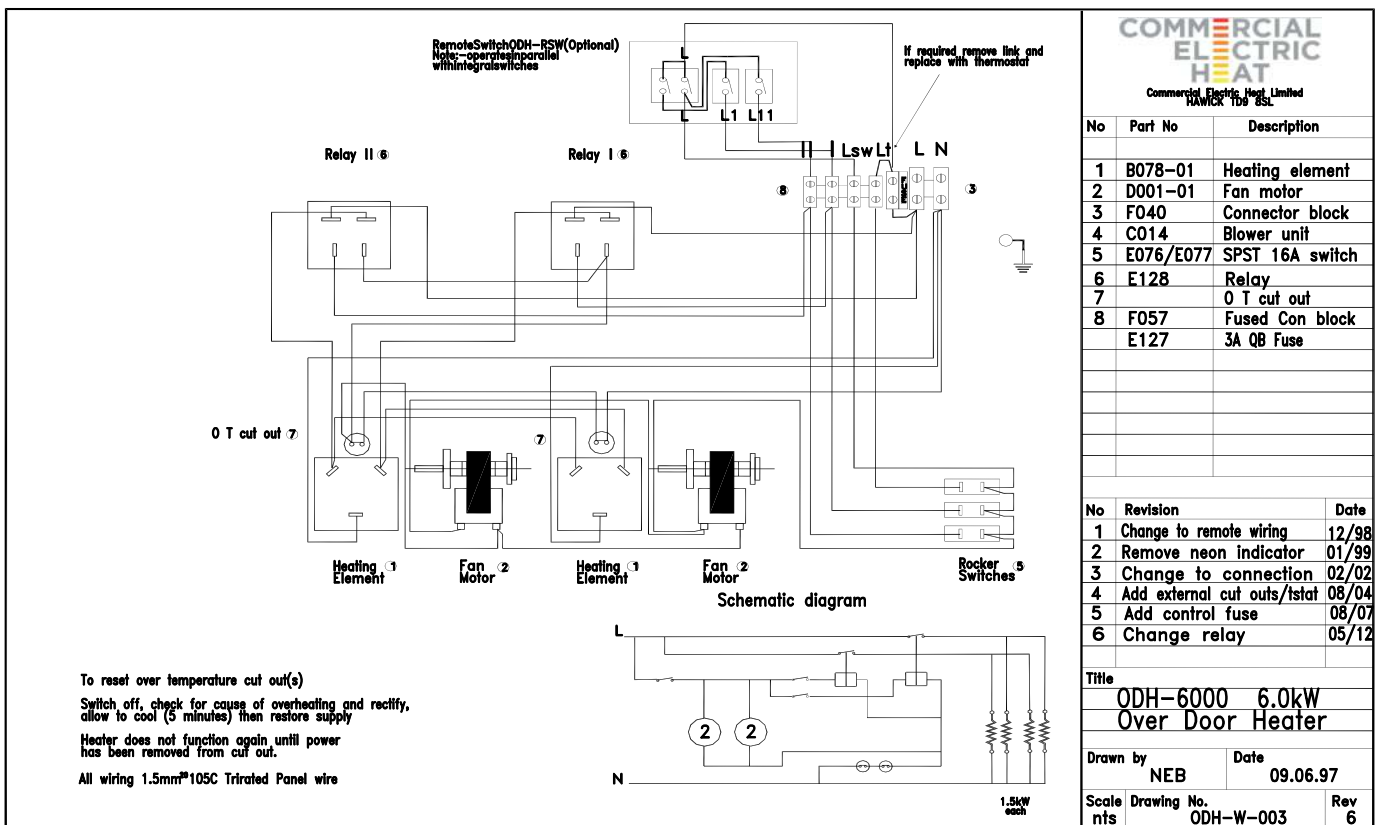
The heater should be cleaned occasionally to reduce the build up of dust which may cause the unit to overheat

WARRANTY

This product is guaranteed, in accordance with our Conditions of Sale, for a period of 12 months from date of purchase. We will repair or replace, at our discretion, any part found to be defective. We cannot accept responsibility for any consequential liability.

The warranty will be invalid if the heater has not been installed in accordance with these instructions.

This does not affect your statutory rights.



Please keep these instructions for future reference

The Manufacturers reserve the right to change the specification without prior notice EO&E

P01



Commercial Electric Heat Limited
Burnfoot Industrial Estate
HAWICK
Roxburghshire
TD9 8SL

Tel 01450 372103 Fax 01450 377800
Email sales@cehltd.co.uk Web www.cehltd.co.uk