

# Installation Instructions HLH-3000 High Level Heater

Reference  
J233e

## SAFETY

The correct procedures for working at height must be adopted when installing this heater.

The heater must be installed by a suitably qualified person in accordance with current regulations.

## CONTENTS

Remove from carton and check contents:

- heater unit
- mounting bracket
- 2 no. M6 bolts, 2 no. shakeproof washers, 4 no. plain washers. Ensure all packing material is removed and inlet/outlet grilles are clear.

## LOCATION

This heater is designed for high level use. It must not be installed less than 1.8m from floor level and the maximum recommended mounting height is 2.3m. It should not be positioned immediately below a fixed socket outlet.

## FIXING

The heater can be mounted either a) directly to the wall or b) to the wall or ceiling using the bracket supplied.

- a) The unit is mounted directly to the wall via two keyhole slots and fixed via two holes.
- 1) Securely fix two No.10 screws (not supplied) at 350mm centres 169mm above desired position for outlet grille.
  - 2) Slide unit over screws and ensure secure fixing.
  - 3) For extra security the front cover can be removed and the two additional mounting holes used

(DISCONNECT FROM POWER SUPPLY BEFORE REMOVING COVER)

- b) The bracket can be fixed to either the wall or ceiling provided secure fixings can be made
- 1) Remove plugs from holes in end of unit, loosely fit M6 bolts with 2 plain washers and shakeproof washer closest to head.
  - 2) Provisionally place in bracket to ascertain optimum location and mark fixing holes.
  - 3) Remove from heater and securely fix bracket
  - 4) Replace heater at appropriate angle and tighten bolts securely.

## ELECTRICAL CONNECTIONS.

The Heater should be installed in accordance with the latest edition of the IEE Requirements for Electrical Installations (BS EN 7671:2018) by a suitably qualified person.

The unit is NOT suitable for connection via a 13A plug and should be permanently connected to a suitable 240Vac 50Hz. power supply incorporating a means of isolation having a contact separation of at least 3mm in all poles.

Connect as follows:-

Green-yellow wire to terminal marked E , with earth symbol  or coloured green or green-yellow.

Blue wire to terminal marked N Brown wire to terminal marked L

**WARNING: THE HEATER MUST BE EARTHED.**

## OVER TEMPERATURE CUT OUT

Should the heater exceed normal operating temperature the over temperature cut out on the heating element will operate.

**TO RESET** - switch off power to the unit and allow to cool before switching on again. The heater does not function again until power has been removed from the cut out. If the problem persists consult a suitably qualified person.

Note:- **DO NOT COVER THE UNIT** or allow the inlet grille to be obstructed as this could cause over heating and possible damage.

## CLEANING

The heater should be cleaned occasionally to reduce the build up of dust which may cause the unit to overheat

## CONTROLS

Control is by the 3 switches located next to the outlet grille.

Switch positions are:-

- I/O: - Fan on.
- Middle red: - Fan and 1.5kW heat.
- End red: - Fan and 1.5kW heat.
- Both red: - Fan and 3kW heat

Note: the switches are electrically interlocked to ensure the heat cannot be on without the fan operating the thermostat (if fitted) controls both fan and heat.

## THERMOSTAT (IF FITTED)

Turn thermostat fully clockwise. Allow heater to run until room is at desired temperature.

NOTE: Heater must run for approx. 5 minutes before thermostat will control at desired comfort level Turn thermostat counterclockwise until heater just turns off.

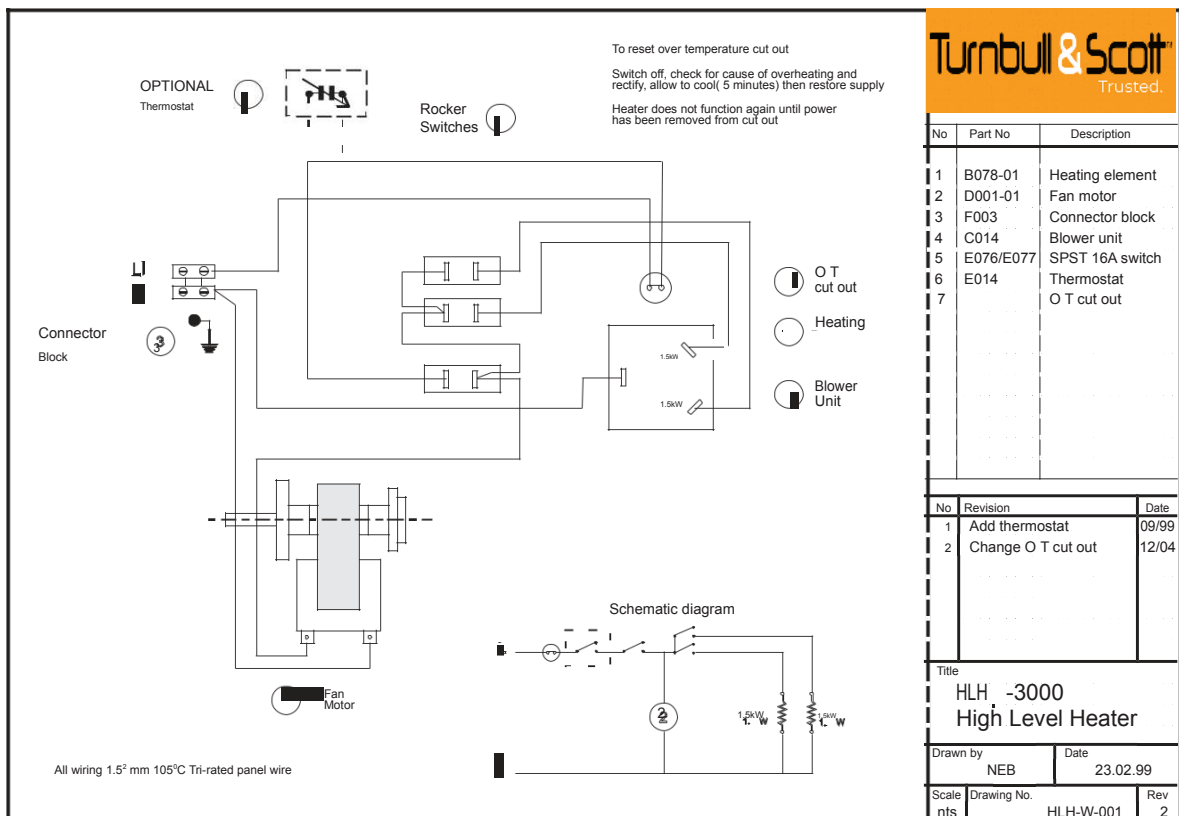
A remote thermostat(CRST16) can be fitted in the live supply if required.

## WARRANTY

This product is guaranteed, in accordance with our Conditions of Sale, for a period of 12 months from date of purchase. We will repair or replace, at our discretion, any part found to be defective. We cannot accept responsibility for any consequential liability.

The warranty will be invalid if the heater has not been installed in accordance with these instructions.

This does not affect your statutory rights.



Please keep these instructions for future reference

The Manufacturers reserve the right to change the specification without prior notice EO&E

P01



Turnbull & Scott Group  
Burnfoot Industrial Estate  
HAWICK  
Roxburghshire  
TD9 8SL

Tel 01450 393 983  
Web www.turnbull-scott.co.uk/contact/