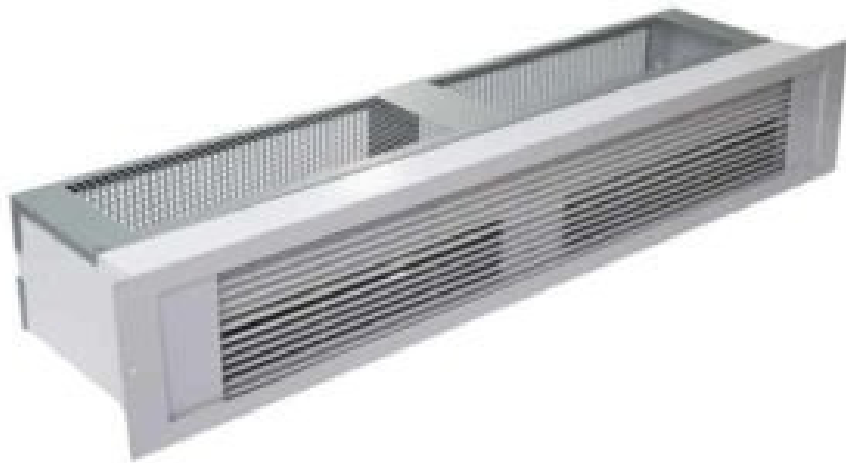


Recessed Electric Over Door Heater



Turnbull & Scott™
Trusted.

RDH | Recessed Electric Over Door Heater



PRODUCT DESCRIPTION

A powerful fan heater designed to be concealed in a ceiling void or bulkhead above a door, the electric recessed over door heater warms the air around an entrance providing a warm welcome to those entering. Ideal for installation in shops, retail outlets, offices, entrance halls above doors that are typically closed more often than open. The heat output ranges from 3kW to 9kW depending on the selected model.

The included mounting arrangement allows the electric recessed over door heater to be fitted within the ceiling space or over door bulkhead with only the front protruding to deliver the warm air flow. The frames around the outlet grille have a white powder coated finish.

All models are hardwired for installation directly to an electrical circuit by an electrician. All models are available for single phase 230V electricity supply. The RDH-9000 model is also available for three phase 400V supply.

All models are supplied with a remote wall switch for temperature control, offering heat and fan only options. Additional control options include a remote thermostat and/or time controller, which can be purchased at an additional cost.



RDH Electric Recessed Over Door Heater



Remote Switch Unit

RDH | Recessed Electric Over Door Heater

FEATURES

- 3kW, 4.5kW, 6kW and 9kW units available
- Mounting suitable for ceiling void or bulkhead installation
- Can be mounted from above or below ceiling
- Over temperature cut-out with power off reset
- Selection of heat and fan only with remote switch unit
- Complete with grille frame for a neat installation
- Outlet grille and frame have white powder coated finish (RAL 9010) as standard
- Other RAL colour powder coating finishes available on request depending on volumes

CONTROL

Heat output and fan only control is achieved with the included remote switch unit.

RDH-3000 Fan only with 1kW, 2kW and 3kW.

RDH-4500 Fan only with 2.25kW and 4.5kW.

RDH-6000 Fan only with 3kW and 6kW.

RDH-9000 Fan only with 4.5kW and 9kW.

OTHER CONTROL OPTIONS

The RDH-3000 and RDH-4500 can be controlled by a remote thermostat and/or time controller of suitable rating, connected in the main supply line (not included).

The RDH-6000 and RDH-9000 can be controlled by a remote thermostat and/or time controller via the heater's control circuit (not included).

TECHNICAL SPECIFICATION

Product Code	Control Type	kW	Volts	Heater			Grille			Weight kg
				Length mm	Height mm	Depth mm	Length mm	Height mm	Depth mm	
RDH-3000	Remote switch included	3	230	570	210	120	625	145	120	6
RHD-4500	Remote switch included	4.5	230	570	210	120	625	145	120	6
RDH-6000	Remote switch included	6	230	800	210	120	855	145	120	13
RDH-9000	Remote switch included	9	230/400	1170	210	120	1225	145	120	13

RDH | Recessed Electric Over Door Heater

INSTALLATION

The heaters are designed to take their input air from the ceiling void. It is, therefore, imperative that a suitably sized inlet grille is provided within the ceiling or enclosure. The minimum clearance to the top inlet grille is 20mm, to the back 30mm and to the front inlet grille 100mm. If one inlet grille is at its minimum dimension the other must have an unrestricted airflow.

For optimum effect the heater should be mounted as close as possible to the top of the doorway. The maximum recommended mounting height is 2.3m for 3kW and 2.8m for 4.5kW, 6kW and 9kW units.

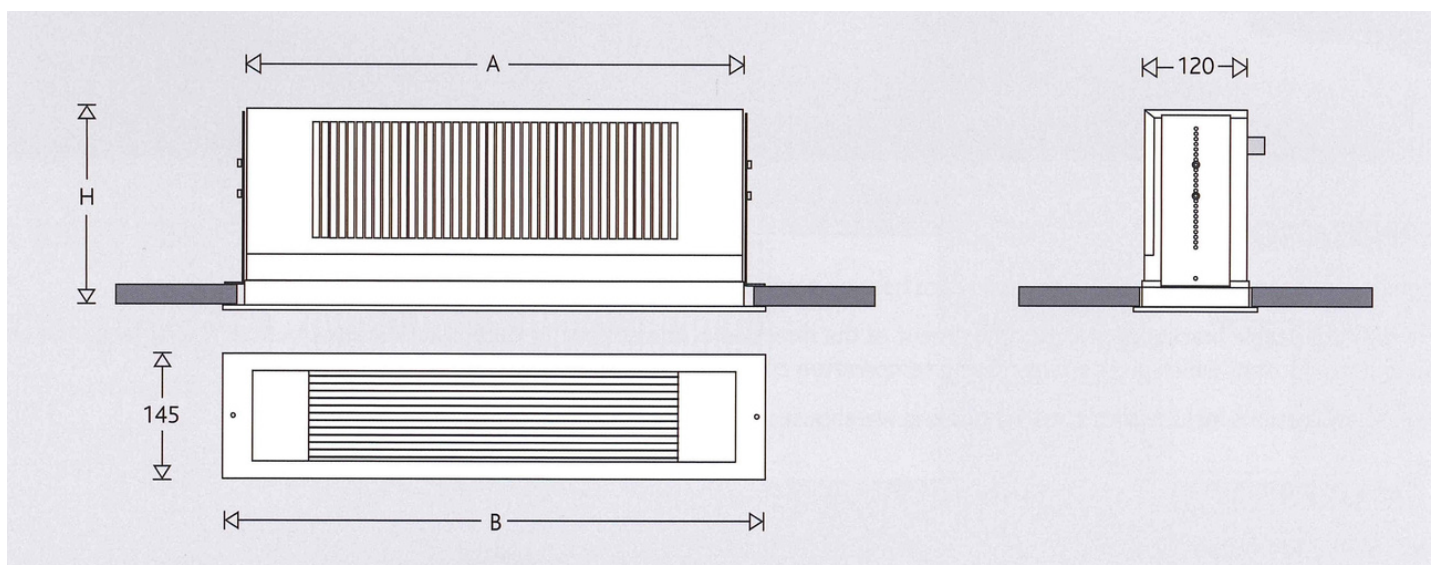
It is recommended a frame is provided around the ceiling opening. The adjustable brackets then allow fixing to the top of this frame or to the face of the ceiling. Alternatively, holes are provided in the top of heater for drop rod fixings.

The grille frame is fixed directly to the ceiling to provide a decorative finish.

3kW, 4.5kW and 6kW units are only suitable for connection to a 230V single phase power supply. The 9kW is suitable for both a 230V single phase or 400V three phase and neutral supply. Connection should be made to a suitably fused power supply via the remote switch unit. 4.5kW, 6kW and 9kW must be connected directly to the power distribution board.

Connection should be via a 2 pole switched connection unit having a contact separation of at least 3mm in all poles.

All electrical connections should be made by a suitably qualified person in accordance with the latest edition of the IEE Requirements for Electrical Installation (BS 7671:2008).



DECLARATION OF CONFORMITY

Name of manufacturer/supplier: Turnbull & Scott (Engineers) Ltd.
Unit 1A,
Burnfoot Industrial Estate,
Hawick,
Roxburghshire,
TD9 8SL
U K

Description of Product: Electric recessed over door heater
Model No: MP-RDH-xxxx.

Serial No: See product label

Year of Manufacture: Incorporated in Serial No.
B= 2018, C=2019, D=2020 etc.

Directives/Regulations to which the product conforms: 1. The Electromagnetic Compatibility Regulations 2016, with specific reference to BS EN 61000
2. The Electrical Equipment (Safety) Regulations 2016, with specific reference to BS EN 60335-1:2012 and BS EN 60335-2-30:2009+A11:2012

Name of Authorised Representative: S.R.Mcilwain
Position of Authorised Representative: Technical Director

Declaration

I declare that as the authorised representative, that the above information in relation to the supply/manufacture of this product is in conformity with the stated standards and other related documents following the provisions of UK legislation.

This declaration is issued under the sole responsibility of the product manufacturer.

Signed.



RDH | Recessed Electric Over Door Heater

Additional Information

The technical documentation for the RDH is available from:

Name: Turnbull & Scott (Engineers) Ltd.

Address: Unit 1A,
Burnfoot Industrial Estate,
Hawick,
Roxburghshire,
TD9 8SL
U K

Place of issue: Hawick, Scotland.

Contact: info@turnbull-scott.co.uk
Please use email title; RDH technical enquiry





Burnfoot Industrial Estate
Roxburghshire
Scotland, TD9 8SL

www.turnbull-scott.co.uk
+44 (0)1450 372 053