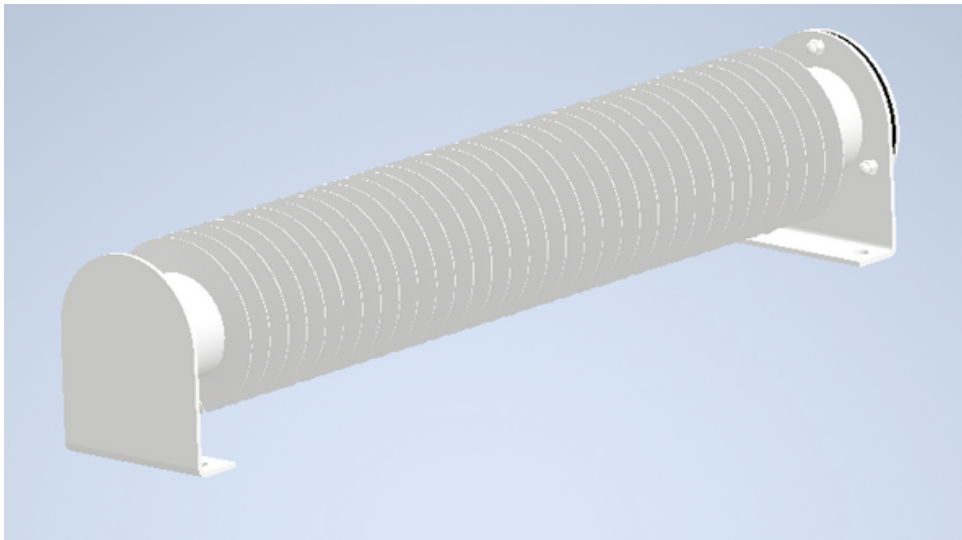


# Electric Finned Tube Radiator



**Turnbull & Scott™**  
Trusted.

# CFT | Electric Finned Tube Radiator



## PRODUCT DESCRIPTION

This tubular radiator is a highly robust electric convection heater used extensively in industrial environments for frost protection & temperature maintenance in plant rooms and cabinets, and for space heating in workshops, storage rooms, site offices etc. Its IP65 rating means it is also the first choice for sites where washing down may take place such as dairies, kennels & catteries, zoos, greenhouses and aboard marine vessels.

In addition to industrial applications, its ruggedly stylish look lends itself to commercial environments and public buildings also, such as libraries, museums, concert halls, retail stores and showrooms. The wire guard is recommended where close contact with people and animals cannot be avoided.

Because the Electric Finned Tube Radiator is made with almost no plastic (only 4 grammes) they are ideal in enclosed spaces such as underground and metro systems where fire regulations prohibit products with plastic that create smoke risks which may prevent easy exit.

## KEY FEATURES

- Heavy duty finned steel tube
- Reliable mineral insulated metal sheathed element
- Suitable for floor or wall mounting (must be horizontal)
- Large terminal box for easy connections
- Terminal box welded to tube and sealed to IP65
- Slotted fixings for easier positioning
- 230V and 110V units as standard (other voltages also available)
- Special 24V 250W unit for mobile and small boat applications
- Matt black high temperature powder coat finish as standard

## ACCESSORY OPTIONS

- Remote exterior frost thermostat to IP65
- Remote interior frost thermostat
- Remote interior room thermostat - standard
- Remote interior room thermostat - tamper proof
- Programmable wireless thermostat
- Wire guard for added safety
- Units and wire guards available in various RAL colours at additional cost – contact us for pricing

# CFT | Electric Finned Tube Radiator

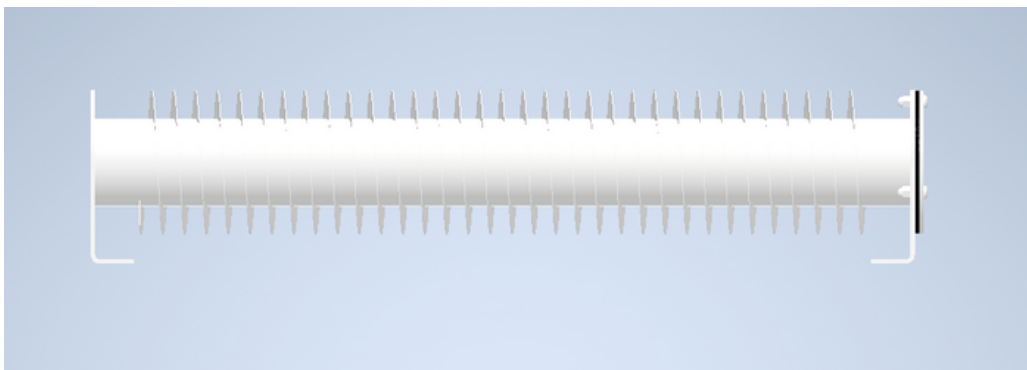
## TECHNICAL SPECIFICATION

Product Code	kW	Volts	Length mm	Fix Cent mm	Height mm	Depth mm	Weight kg
<b>CFT-0300</b>	0.3	230	360	253	120	112	4.2
<b>CFT-0500</b>	0.5	230	585	478	120	112	7
<b>CFT-0750</b>	0.7	230	810	703	120	112	9.8
<b>CFT-1000</b>	1	230	1035	928	120	112	12.6
<b>CFT-1500</b>	1.5	230	1485	1378	120	112	18.3
<b>CFT-2000</b>	2	230	1935	1828	120	112	23.9
<b>CFT-0301</b>	0.3	110	360	253	120	112	4.2
<b>CFT-0501</b>	0.5	110	585	478	120	112	7
<b>CFT-0751</b>	0.7	110	810	703	120	112	9.8
<b>CFT-1001</b>	1	110	1035	928	120	112	12.6
<b>CFT-1501</b>	1.5	110	1485	1378	120	112	18.3
<b>CFT-2001</b>	2	110	1935	1828	120	112	23.9

## DESIGN & INSTALLATION

All electrical connections should be made by a suitably qualified person in accordance with the latest edition of the IEE Requirements for Electrical Installation (BS 7671:2008). Full installation details can be found below:

<https://www.turnbull-scott.co.uk/wp-content/uploads/2022/06/CFT-Installation-Instructions.pdf>



## INSTALLATION

All electrical connections should be made by a suitably qualified person in accordance with the latest edition of the IEE Requirements for Electrical Installation (BS 7671:2008).

Remove from carton and remove all packing materials.

**CAUTION:- THE HEATER MUST NOT BE COVERED.**

## LOCATION and MOUNTING

The heater should be positioned to allow an unrestricted airflow and minimum chance of being accidentally covered. It should not be positioned below a fixed socket outlet. The substantial integral mounting brackets allow mounting to either wall or floor in a HORIZONTAL position. Ensure the fixings used are adequate to support the weight of the unit.

## GUARDING.

Although surface temperatures may be considered acceptable for some applications, the optional wire guard (CWG-xxxx) is recommended so that contact with the hot surface is avoided. Specific examples would be animal enclosures or tight spaces such as crane cabs etc.

## ELECTRICAL CONNECTIONS.

Only **HEAT RESISTING** cabling should be used for direct connection to the terminal posts. All connections should be made to current regulations by a suitably qualified person. **Dependant on specification** the unit should be connected to a suitable power supply incorporating a means of disconnection having a contact separation of 3mm in all poles.

Connect as follows:-

Live directly to first element terminal

Neutral directly to second element terminal

Green-yellow wire to terminal on terminal box marked with earth symbol

If installed in **WET** conditions suitable glands must be used to ensure IP65 integrity is maintained

**WARNING: THE HEATER MUST BE EARTHED.**

Full installation details can be found below:

<https://www.turnbull-scott.co.uk/wp-content/uploads/2022/06/CFT-Installation-Instructions.pdf>

## DECLARATION OF CONFORMITY

Name of manufacturer/supplier: Turnbull & Scott (Engineers) Ltd.  
Unit 1A,  
Burnfoot Industrial Estate,  
Hawick,  
Roxburghshire,  
TD9 8SL  
U K

Description of Product: Heavy Duty Finned Tubular Heater for wall or floor mounting  
Model No: MP-CFT-xxxx.

Serial No: See product label

Year of Manufacture: Incorporated in Serial No.  
B= 2018, C=2019, D=2020 etc.

Directives/Regulations to which the product conforms: 1. The Electromagnetic Compatibility Regulations 2016, with specific reference to BS EN 61000  
2. The Electrical Equipment (Safety) Regulations 2016, with specific reference to BS EN 60335-1:2012 and BS EN 60335-2-30:2009+A11:2012

Name of Authorised Representative: S.R.Mcilwain  
Position of Authorised Representative: Technical Director

### Declaration

I declare that as the authorised representative, that the above information in relation to the supply/manufacture of this product is in conformity with the stated standards and other related documents following the provisions of UK legislation.

This declaration is issued under the sole responsibility of the product manufacturer.

Signed.



## Additional Information

The technical documentation for the CFT is available from:

Name: Turnbull & Scott (Engineers) Ltd.

Address: Unit 1A,  
Burnfoot Industrial Estate,  
Hawick,  
Roxburghshire,  
TD9 8SL  
U K

Place of issue: Hawick, Scotland.

Contact: [info@turnbull-scott.co.uk](mailto:info@turnbull-scott.co.uk)  
Please use email title; CFT technical enquiry

**UK  
NI**

**CE**

**UK  
CA**



Burnfoot Industrial Estate  
Roxburghshire  
Scotland, TD9 8SL

[www.turnbull-scott.co.uk](http://www.turnbull-scott.co.uk)  
+44 (0)1450 372 053