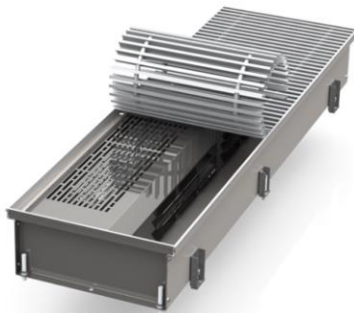


Turnbull & Scott™
Trusted.

Turnbull & Scott Trench Heating



Hitte Fan Assisted Electric

CONTEMPORARY TRENCH AND PERIMETER HEATING FROM HITTE

The Hitte team has been designing and manufacturing space heating products for over 20 years in the Czech Republic. High quality materials, skilled engineers and modern production methods are combined to deliver the Hitte portfolio which carries a 10 year manufacturer's warranty.

The contemporary and stylish Trench and Perimeter Heating ranges offer highly effective and discrete heating and cooling solutions whether installed as primary or secondary heating systems or as a cold air barrier under large glazed areas.

The Hitte Trench range includes horizontal Convection, Fan Assisted and Electric options as well

as combined Heating—Cooling units. Models are also available for use in wet and humid environments.

For areas where creating a floor trench is not feasible, the Natural Convection floor standing Perimeter Heater presents an elegant alternative.

In addition to the standard straight trench units, mitred cornering, and blank units can be added to provide a continuous aesthetic. Curved/arc shaped trench heaters can also be manufactured to order. The Hitte team will undertake bespoke designs for the most complex and challenging of projects.

PRODUCT FEATURES



- 1 The standard trough, for use in dry environments, is available in either black powder coated FeZn steel or AISI 304 stainless steel. For wet and humid environments and for heating—cooling trench units the trough is AISI 316 stainless steel.
- 2 The flexible sprung design grille covers are available in various aluminum shades or wood.
- 3 There are 2 protective metal cover plates, the larger covers the pipe connections and the smaller covers the electrical terminals.
- 4 The decorative edging can match the selected grille colour. It must be flush with the finished floor or within 0—1 mm.
- 5 The spacer is used to maintain the geometry of the trough prior to installation. It should be removed post—installation.
- 6 The 24DC fan for fan—assisted trench heating models. (Fan—assisted trench heating models have a significantly increased heating output level compared to natural convection models).
- 7 The heat exchanger element has aluminum fins on copper tubes with 1/2" pipe connections.
- 8 The drainage pipe for water/condensate outflow, for models NWX, FWX, FCX.
- 9 The Weight adjustable fixing screw attaches the trench unit to the trench floor after the unit has been leveled.
- 10 Adjustable leveling legs. There will be one at each corner and additional leveling legs along the length of the trough will be fitted in longer units.
- 11 Knock—outs for heating pipe access.
- 12 Air bleed valve.

TRENCH HEATING PRODUCT CODES



convectors

HITTE FXX 080 245 2000 X N X X

MODEL

- NXX** — natural convection
- NXA** — natural convection, an air spigot
- NWX** — natural convection, for wet environment
- NWA** — natural convection, for wet environment, an air spigot
- NSX** — natural convection, self-standing
- NMX** — natural convection, wall-mounted
- FXX** — with a fan
- FXA** — with a fan, an air spigot
- FWX** — with a fan, for wet environment
- FfXA** — with a fan, for wet environment, an air spigot
- FSX** — with a fan, self-standing
- FMX** — with a fan, wall-mounted
- FCX** — with a fan, cooling/heating
- FüA** — with a fan, cooling/heating, an air spigot
- EXX** — electrical 220V

HEIGHT

WIDTH

LENGTH

TROUGH MATERIAL

- y — standard, AISI 304 stainless steel
- F — black powder coated FeZn steel, RAL 9005
- A — non-standard, additional information required

EDGING

- jl — aluminum
- L — light b00Z9

- - without edges

- A — non-standard, additional information required

PIPE CONNECTION

- X — standard (right side)
- L — left side
- A — non-standard, additional information required

PRODUCT CLASSIFICATION

- X — standard
- A — non-standard, additional information required

grilles

HITTE s XX 080 245 2000 X N XX

MODEL

- G** — a grille

S — on a spring

T — consists of segments

L — longitudinal

GRILLE CLASSIFICATION

X — standard

A — non-standard,

additional information required

HEIGHT

WIDTH

LENGTH

X — standard

A — non-standard, additional information required

GRILLE MATERIAL

N — aluminum

L — light bronze

D — dark bronze

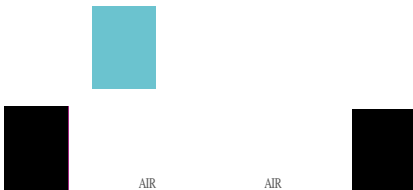
A — ash tree

B — beech

| — stainless steel

y — standard

A — non-standard, additional information required



AIR

AIR

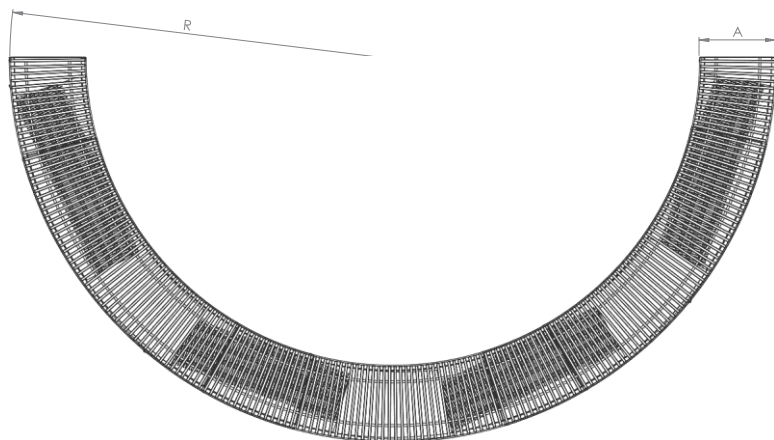
TROUGH MADE OF BLACK POWDER
COATED FeZn STEEL,

TROUGH MADE OF
AISI 304 STAINLESS STEEL

TROUGH MADE OF
AISI 316 STAINLESS STEEL
FOR WET/UMID ENVIRONMENTS
AND FOR IMPROVED HEATING...

FOR

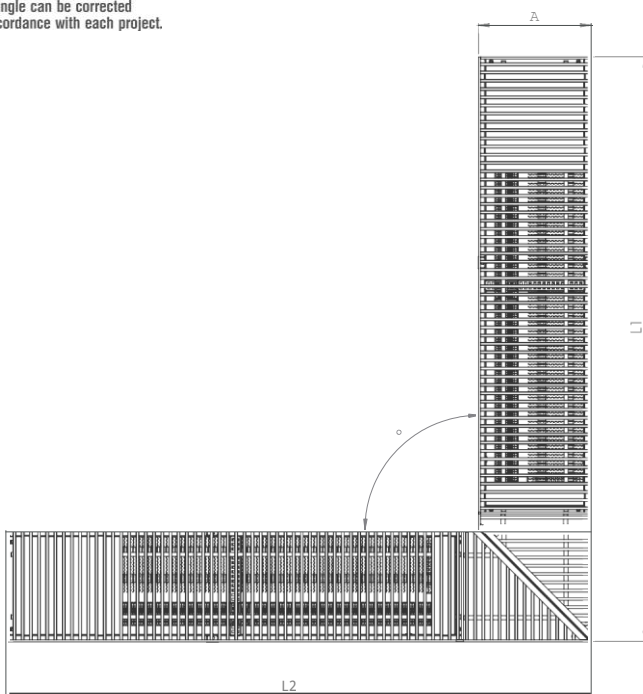
CURVED TRENCH HEATING



MITRED CORNERS



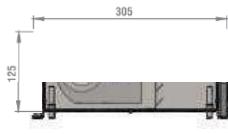
The angle can be corrected
in accordance with each project.



EXX



220V ELECTRIC FAN-ASSISTED TRENCH HEATING



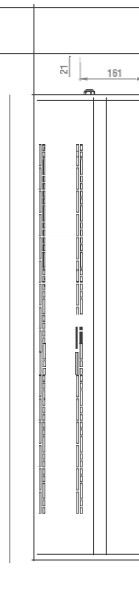
L 500 750 1000 1250 1500 1750 2000

EXX Specifications

220V Electric Fan-assisted Trench Heating

Description:

- **powerful convector for autonomous heating;**
- only for use in standard dry environments;
- heat source —230V electric current;
- heating elements are combined with fan (one speed);
- use this EXX model under windows when installation of traditional 'wet system' trench heating is not feasible;
- the external surface of the heater unit is heated to permissible norms which makes it suitable for use in rooms with children and pets;
- a build in fuse protects the heating element overheating.



To control the electric trench convector, we recommend a Siemens RDG 110 thermostat. It has a built-in temperature sensor, which is responsible for monitoring the room temperature by turning the fan on and off with the heating element at the same time.

EXX Thermal Output Table

Length (L)	500	750	1000	1250	1500	1750	2000
Output (Q)	700	750	1500	1500	2250	2250	3000

EXX Grille Options



MATT ALUMINIUM



DARK BRONZE



LIGHT BRONZE

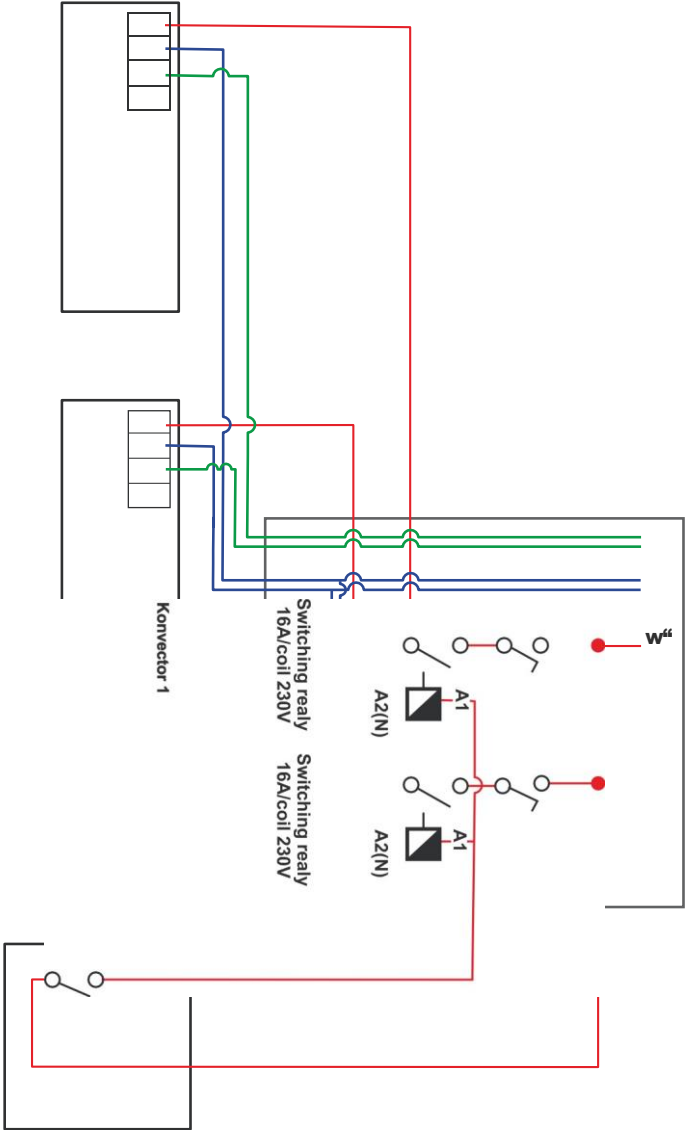


BLACK RAL 9005



Standard Grille

For use with aluminium grilles only.






Unit 1a, Burnfoot Industrial Estate
Roxburghshire,
Scotland. TD9 8SL

www.turnbull-scott.co.uk

+44 (0) 1450 372 103

A decorative graphic element in the bottom right corner of the page, consisting of a thick blue curved line that sweeps upwards and to the right, set against a solid orange background.